

TABLE 1 - Mod. "MILANO LX" - Agg. 10/05

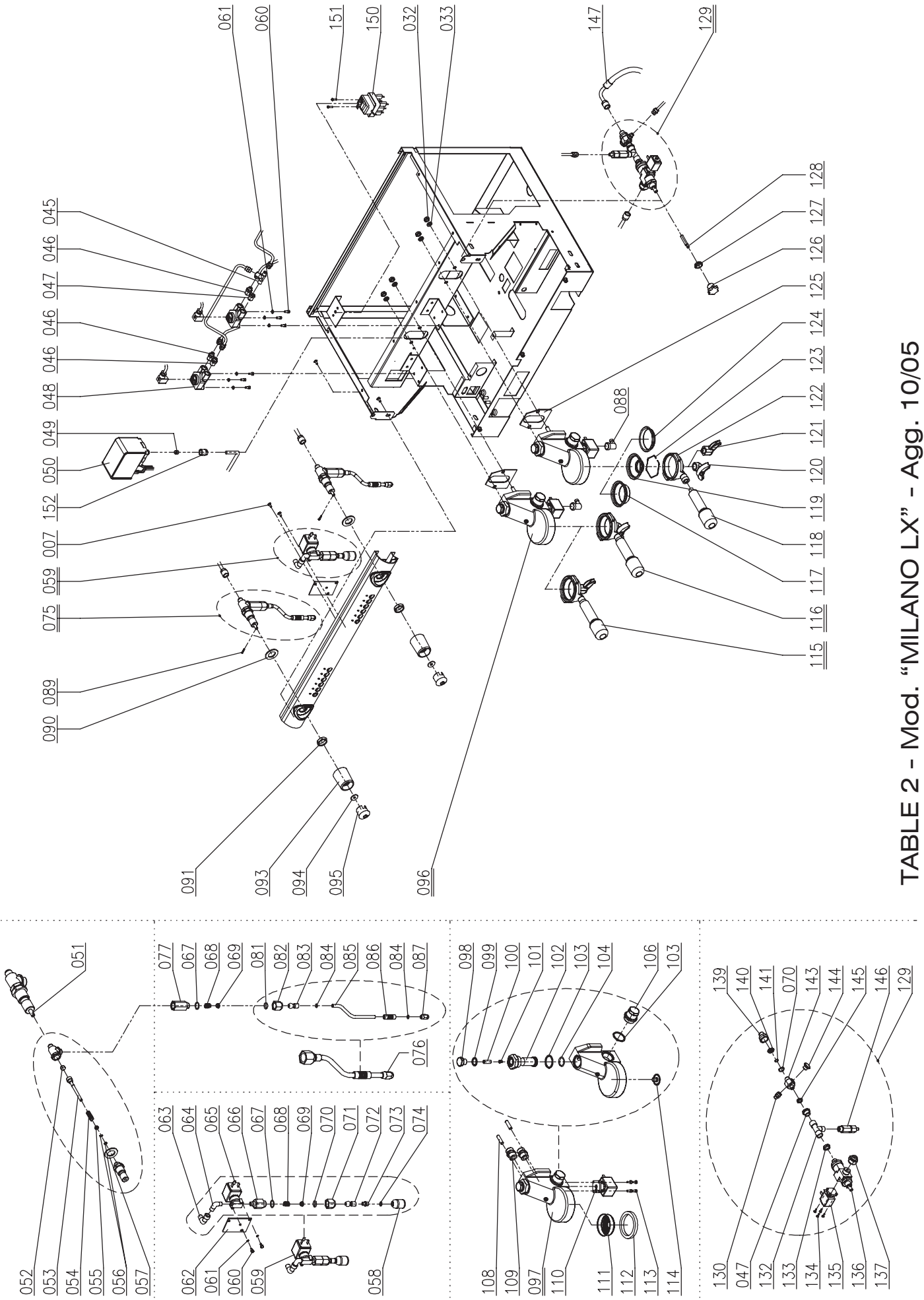


TABLE 2 - Mod. "MILANO LX" - Agg. 10/05

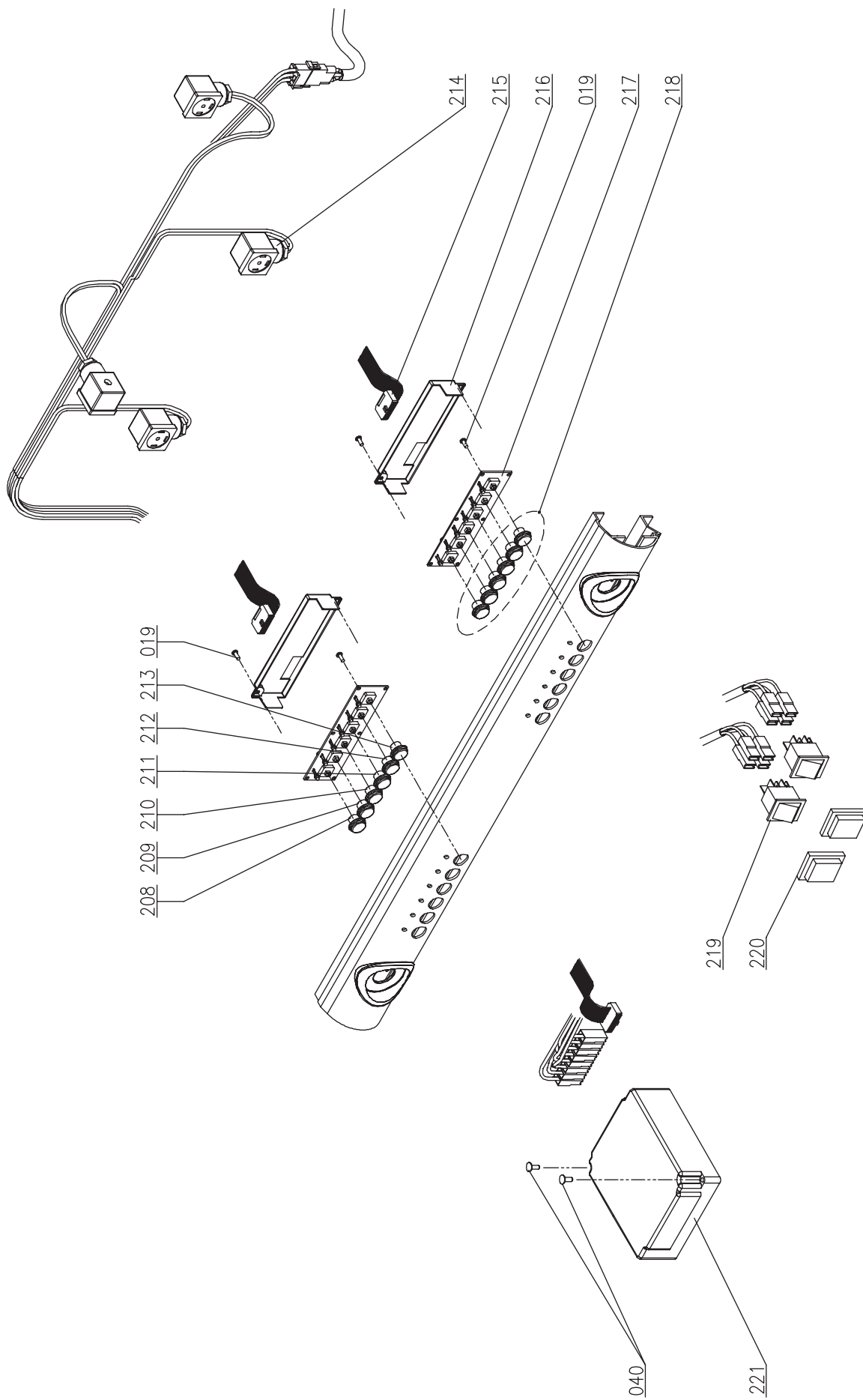


TABLA 4 - Mod. "MILANO LX" - act. 10/05

KEY TO EXPLODED VIEW MILANO LX REV. 10-05

POS.	CODE	DESCRIPTION
1A	10015272	UPPER GRID MLX 1GR
1B	10015274	UPPER GRID MLX 2GR
1C	10015278	UPPER GRID MLX 3GR
2	10955013	HOT SURFACE LABEL
3A	10015254	UPPER DRIP TRAY MLX 1GR
3B	10015256	UPPER DRIP TRAY MLX 2GR
3C	10015260	UPPER DRIP TRAY MLX 3GR
4	10102249	CHECK NUT PG.21
5	10805083	HEX-HEAD SCREW M4X12 ZN
6	10805562	PLAIN WASHER D4x16x1.5 ZN
7	10805061	TRUSS HEAD SCREW +- M6X12 NI
8A	10015284	L.H. SIDE PANEL MLX RED
8B	10015288	L.H. SIDE PANEL MLX BLACK
8C	10015292	L.H. SIDE PANEL MLX BLUE
8D	10015296	L.H. SIDE PANEL MLX SILVER
9	10019602	PANEL FIXING PLATE MI
10	10805029	TRUSS HEAD SCREW- M4X35 A2
11	10652066	PANEL SPRING D5X12.5X16
12	10805182	FLATHEAD SCREW+ M4X20 ZN
13	10806672	NUT 3MA A2
14	10352064A	LEVEL INDICATOR GLASS COVER MLX
15A	10029575	CUP GUARD TRIM MLX 1GR
15B	10029580A	CUP GUARD TRIM MLX 2GR
15C	10029585A	CUP GUARD TRIM MLX 3GR
16	10805027	TRUSS HEAD SCREW- M4X10 A2
17A	10952051A	AL RATING PLATE SAN REMO 230V
17B	10952052A	AL RATING PLATE SAN REMO 400V
17C	10952053A	AL RATING PLATE SAN REMO 120V
18	10805950	TEAR-OFF RIVET D3x6
19	10805054	CHEESEHEAD SCREW+ M3X10 A2
20A	10029618	TAP RED RING NUT MI
20B	10029625	TAP BLACK RING NUT MI
20C	10029634	TAP BLUE RING NUT MI
21A	10029685	DRAIN GRID MLX 1GR
21B	10029686	DRAIN GRID MLX 2GR
21C	10029687	DRAIN GRID MLX 3GR
22A	10015264	DRAIN PLATE MLX 1GR
22B	10015266	DRAIN PLATE MLX 2GR
22C	10015268	DRAIN PLATE MLX 3GR
23	10805022	TRUSS HEAD SCREW- M4X20 A2
24A	10015234	LOWER FRONT PANEL MLX 1GR
24B	10015238	LOWER FRONT PANEL MLX 2GR
24C	10015246	LOWER FRONT PANEL MLX 3GR
25A	10015333	EXTRUDED PIECE MLX 1GR SAP
25B	10015334	EXTRUDED PIECE MLX 1GR SED
25C	10015335	EXTRUDED PIECE MLX 2GR SAP
25D	10015336	EXTRUDED PIECE MLX 2GR SED
25E	10015337	EXTRUDED PIECE MLX 3GR SAP
25F	10015338	EXTRUDED PIECE MLX 3GR SED
26A	10029610A	GROUP COVER CASING MI RED
26B	10029627A	GROUP COVER CASING MI BLUE
26C	10029628B	GROUP COVER CASING MI BLACK
26D	10029658	GROUP COVER CASING MI SILVER
27	10102250	CABLE GLAND PG.21
28A	10015360	FRONT PROTECTION MLX 1GR
28B	10015361A	FRONT PROTECTION MLX 2GR
28C	10015363A	FRONT PROTECTION MLX 3GR
29	10803536	SERRATED WASHER D6.2 ZN
30	10805254	CHEESEHEAD SCREW+ 3.5X9.5 NI
31	10955025	EARTH TRIANGULAR LABEL
32	10802500	MEDIUM-HEIGHT NUT M8 ZN
33	10803538	SERRATED WASHER D8.2 ZN

34	10352055	FOOT D.52XH73
35	10022461	DRAIN TRAY MLX 2/3GR
36	10852460	HELICALLY WOUND DRAIN PIPE L.2 M
37	10806099	SS HOSE CLAMP
38A	10015282	R.H. SIDE PANEL MLX RED
38B	10015286	R.H. SIDE PANEL MLX BLACK
38C	10015290	R.H. SIDE PANEL MLX BLUE
38D	10015294	R.H. SIDE PANEL MLX SILVER
39A	10019631	FRAME MLX 1GR BLACK
39B	10019632A	FRAME MLX 2GR BLACK
39C	10019634A	FRAME MLX 3GR BLACK
40	10805084	CHEESEHEAD SCREW+ M4X10 ZN
41A	10015222	SS REAR PANEL MLX 1GR
41B	10015224	SS REAR PANEL MLX 2GR
41C	10015226	SS REAR PANEL MLX 3GR
42A	10352001	CUP GUARD MLX 1GR
42B	10352002	CUP GUARD MLX 2GR
42C	10352003	CUP GUARD MLX 3GR
43A	10015279	CONTROL UNIT PROTECTION MLX 2GR
43B	10015280	CONTROL UNIT PROTECTION MLX 3GR
44	10809012	FLANGED NUT 6MA ZN
45	10852028A	1010 6-6-1/8" M TEE
46	10852580A	1050 6-1/4" M STRAIGHT COUPLER
47	10852520	2530 STRAIGHT REDUCER 1/4M-1/8F
48	10112130	VOLUMETRIC METER
49	10853054	PRESSURE SWITCH BI-CONE D.6mm
50	10602010	PRESSURE SWITCH
51	10402120A	TAP BODY
52	10505558	TAP ROD SEAL
53	10402061	CENTRAL TAP ROD
54	10402014	TAP ROD SPRING
55	10402015	TAP ROD BUSHING
56	10505121	TAP ROD NBR O RING
57	10505561	TAP COPPER BUSHING
58	10402140	DISPENSING HEAD
59A	10402165	COMPLETE WATER TAP MLX 230V
59B	10402166	COMPLETE WATER TAP MLX 120V
60	10805074	HEX-HEAD SCREW M4X8 ZN
61	10803519	SERRATED WASHER D4.2 ZN
62	10019621A	WATER ELECTR. PLATE MI
63	10852600	2020 1/4" M 1/4" F ELBOW
64	10852066A	1020 8-1/8" M ELBOW
65A	10303086	2-WAY SOL. VALVE 1/8" 230V TAP
65B	10303090	2-WAY SOL. VALVE 1/8" 120V TAP
66	10859034	STRAIGHT REDUCER 1/8" M 3/8" M WATER MI
67	10402056	VITON O RING 2062
68	10402043	TAP ARTICULATED JOINT SPRING
69	10402054	TAP ARTICULATED JOINT CAP
70	10402063	EPDM O RING 115
71	10402022B	TAP ARTICULATED JOINT NUT
72	10858589	ARTIC. JOINT FOR STEAM NOZZLE
73	10852069B	WATER ART. JOINT DIFFUSER CONN MI
74	10502041	EPDM O RING 2025
75	10402252	COMPLETE STEAM TAP MLX
76	10402286A	COMPLETE STEAM NOZZLE MLX
77	10852928	STEAM EXTENSION NI
78	10402059	DRAIN TAP W/KNOB
79	10852825	2070 TEE M/F/F 1/2"
80	10852525	2530 STRAIGHT REDUCER 1/2" M-1/4" F
81	10402082	NOZZLE ART. JOINT O RING MLX
82	10402282	STEAM NOZZLE NUT MLX
83	10402288	STEAM NOZZLE ARTIC. JOINT MLX
84	10402081	NOZZLE PIPE O RING MLX
85	10402293A	POL. STEAM NOZZLE MLX
86	10753052	ANTI-SCALD RUBBER PROTECT. D.10

ENGLISH

87	10402279	POL. STEAM NOZZLE JET
88	10255028A	SWIVEL ELBOW F1/8
89	10806370A	TAP SPLIT PIN
90	10803547	WASHER D20 ZN
91	10402028	CHROMED RAISED HALF NUT 1/2"
92	10955015	VOLTAGE TRIANGULAR LABEL
93	10402074	TAP KNOB
94	10402040	BRASS WASHER FOR TAP
95	10351104	STEAM TAP KNOB CAP
96A	10052224	GROUP ASSEMBLY E61 120V TUBES 12
96B	10052225	GROUP ASSEMBLY E61 230V TUBES 12
97	10052130	GROUP HEAD ASSEMBLY SR E61
98	10052137A	GROUP HEAD JET CLOSING CAP E61
99	10502105A	GROUP UPPER CAP GASKET E61
100	10052136	GROUP HEAD FILTER E61/RING
101	10052135	GROUP HEAD JET HOLE D.0.8
102	10052133A	GROUP UPPER HEAD E61
103	10502090A	GROUP HEAD SIDE GASKET E61
104	10502100	INNER GROUP HEAD GASKET E61
105	10402060	DRAIN TAP KNOB
106	10052132A	GROUP SIDE HEAD E61
107	10805069	HEX CONV. SOCK. SCREW M3X10 A2
108	10052134	GROUP STUD BOLTS E61
109	10852810A	1050 STRAIGHT COUPLER 12-1/2"M
110A	10302066	3-WAY SOL. V. HEADER 32X32 230V
110B	10305555	3-WAY SOL. V. HEADER 32X32 120V
111	10052120	GROUP MESH DISPENSING HEAD E61
112	10502110	GROUP UNDERCUP SEAL E61
113	10805071	HEX CH. SOCK. SCREW M4X10 A2
114	10052141	GROUP DIFFUSER E61
115	10402121A	1-CUP FILTER-HOLDER ASSY.
116	10402122A	2-CUP FILTER-HOLDER ASSY.
117	10052110	2-CUP FILTER
118	10052040	FILTER-HOLDER HANDLE
119	10052100	1-CUP FILTER
120A	10052088	SMALL 2-WAY SPOUT, OPEN
120B	10052090	2-WAY SPOUT
121A	10052078	SMALL 1-WAY SPOUT, OPEN
121B	10052080	CURVED 1-WAY SPOUT, OPEN
122	10052030	FILTER-HOLDER BODY
123	10052050	FILTER RETAINING SPRING
124	10052220	SOLID FILTER
125	10502120	GROUP SEAL E61
126	10405555	WATER FILLING HANDWHEEL
127	10805585	NUT NI E22 Th4X3/8"XH6Xd18.5
128	10852038A	EXTENSION L.38 MLX
129A	10053160	FILLING BLOCK ASSY. SR 120V
129B	10053162	FILLING BLOCK ASSY. SR 230V
130	10852080A	1050 6-1/8"M STRAIGHT COUPLER
131A	10102190	POW. CABLE 3X2.5 M3 N5 SINGLE-PH.
131B	10102191	POW. CABLE 5X2.5 M3 N4 THREE-PH.
131C	10102193	POWER CABLE 3X4 M3 N7
131D	10102196	CABLE 3x12AWG SJOOW 3M
131E	10102197	CABLE 3x14AWG SJOOW
132	10855031	2003 TEE F/F/F 1/4"
133	10853081	TEE HEX NUT 1/4" 17X4
134	10805251	CHEESEHEAD SCREW + M3X8 ZN
135A	10303080	2-WAY SOL. V. HEADER 25X25 230V
135B	10303094	2-WAY SOL. V. HEADER 25X25 120V
136	10056000	FILLING BLOCK BODY SR
137	10852770	2520 1/4"M-3/8"F CONNECTION
138	50302018	SCREEN-PRINT. SWITCH LABEL 012
139	10852672	STRAIGHT REDUCER NI CH22X23 3/8F-1/4M
140	10052139	FILLING BLOCK MESH FILTER
141	10502028	VITON O RING 3037

142	10809019	HEX CONV. SOCK. SCREW M3X8 BURNISHED
143	10852682	CONNECTOR NI CH.22X38 1/8"MF
144	10852022	2611 1/8"M CONNECTOR PLUG
145	10853085	HEX NUT 1/8"
146	10652020	CHECK VALVE
147	10852470	STAY PIPE L.450
148	10105180	2-WAY BLOCK M.
149A	10553021	ORANGE IND. LIGHT D6 230V WIRED
149B	10553024	ORANGE IND. LIGHT D6 120V WIRED
150	10111015	THERMOSTAT W/MANUAL RESET
151	10805872	CHEESEHEAD SCREW+ M4X6 ZN
152	10802511	PRESSURE SWITCH NUT 1/4"
153	10122012	SWITCH KNOB
154	10122011	SWITCH KNOB SCREW
155	10852030A	1020 6-1/8"M ELBOW
156	10502020	HEATING ELEMENT WASHER
157	10852530A	1020 10-3/8"M. ELBOW
158A	10455051	HEAT. ELEM. 1950W 120V 1GR
158B	10455053	HEAT. ELEM. 2700W 120V 2GR
158C	10455050	HEAT. ELEM. 1950W 230V 1GR
158D	10455052	HEAT. ELEM. 2700W 230V 2GR
158E	10455054	HEAT. ELEM. 5100W 230V 3GR
158F	10455055	HEAT. ELEM. 5100W 120V 3GR
158G	10455080	HEAT. ELEM. 4500W 230V 2GR
159	10106060	HEAT. ELEM. BRASS JUMPER
160	10402109	LEVEL IND. GLASS ASSY. MLX SX
161	10852659	2613 3/8"F CAP
162	10805075	HEX-HEAD SCREW M5X8 ZN
163	10803520	SERRATED WASHER D5.3 ZN
164	10012041A	WHITE LEVEL IND. GLASS SUPPORT MLX
165	10402163A	LEVEL IND. GLASS PLUG 1/4" NI
166	10505550A	PTFE GASKET
167	10042020A	LEVEL IND. GLASS SPACER D.10
168	10105230A	LEVEL IND. GLASS UPPER BLOCK NI
169	10705015	LEVEL IND. GLASS O RING 3043
170	10806255A	LEVEL IND. GLASS O RING GLAND
171	10805565A	LEVEL IND. GLASS O RING GLAND NUT 1/4" NI
172	10402100	MAX-MIN LEVEL IND. GLASS RED
173	10042022	LEVEL IND. GLASS SPACER MI
174	10852291A	1050 STRAIGHT COUPLER 10-1/4"M
175	10402224	EXCHANGER FITTINGS ASSEMBLY
176A	10122016	SINGLE-PHASE SELECTOR SWITCH
176B	10122018	THREE-PHASE SELECTOR SWITCH
177	10022187	SELECTOR SWITCH FLANGE
178	10552013A	PRESSURE GAUGE W/DOUBLE SCALE
179	10855556	1310 NOSE FITTING D4
180	10002021	CAPILLARY TUBE
181	10855557	1303 NUT 4-1/8"F
182	10853058	1510 STRAIGHT OUTLET CONNECTOR 6-1/8M
183A	10252079A	EL. MOTOR 150W 120V 1-2GR
183B	10252080A	EL. MOTOR 150W 230V 1-2GR
183C	10252086	EL. MOTOR 165W 230V 2-3GR
184	10255022	VIBRATION-DAMPING BUFFER
185	10805512	MEDIUM-HEIGHT NUT 4MA ZN
186A	10252070	PUMP P1504 W/CLAMP 1-2GR
186B	10252072	PUMP P204 W/CLAMP 3GR
187A	10252038	MOTOR CAPACITOR 150W
187B	10252040	MOTOR CAPACITOR 165W
188	10852450	STAY PIPE L=2000
189	10852280A	1020 8-3/8"M ELBOW
190	10852540	2611 1/4"M PLUG
191	10852180	COPPER WASHER 1/4"
192A	10002655	COPPER BOILER 3GR D.205 Fitt.1/2"
192B	10002658	COPPER BOILER 2GR D205 Fitt..1/2"
192C	10002663	COPPER BOILER 1GR D.205 Fitt..1/2"

ENGLISH

193A	10052146	JET WITHOUT HOLE, PIPES 12
193B	10052147	JET HOLE D.2 PIPES 12
193C	10052148	JET HOLE D.4 PIPES 12
193D	10052149	JET HOLE D2.5 PIPES 12
193E	10052151	JET HOLE D3 PIPES 12
193F	10052152	JET HOLE D3.5 PIPES 12
194	10852330A	1020 ELBOW 12-1/2"M
195	10853053	STRAIGHT SUCTION PIPE 1/4"M
196	10852250A	1020 6-1/4"M ELBOW
197	10806324	COPPER WASHER 3/8"
198	10652040	BOILER RELIEF VALVE
199	10652010	SAFETY VALVE
200	10852060A	1020 8-1/4"M ELBOW
201	10112042	LEVEL SENSOR 140mm
202	10852240A	1170 6-1/4"M JOINT CONNECTION
203	10859030	2003 TEE F/F/F 1/8"
204	10042017	UNIVERSAL INJECTOR
205	10655555	EXPANSION VALVE
206	10905010	TRANSPARENT SILICONE TUBE
207	10002012	COPPER PIPE D. 4X0.5
208A	10029616	RED BUTTON S/SHORT COFFEE MI
208B	10029626	BLACK BUTTON S/SHORT COFFEE MI
208C	10029635	BLUE BUTTON S/SHORT COFFEE MI
209A	10029619	RED BUTTON S/LONG COFFEE MI
209B	10029630	BLACK BUTTON S/LONG COFFEE MI
209C	10029636	BLUE BUTTON S/LONG COFFEE MI
210A	10029620	RED BUTTON D/SHORT COFFEE MI
210B	10029631	BLACK BUTTON D/SHORT COFFEE MI
210C	10029637	BLUE BUTTON D/SHORT COFFEE MI
211A	10029621	RED BUTTON D/LONG COFFEE MI
211B	10029632	BLACK BUTTON D/LONG COFFEE MI
211C	10029639	BLUE BUTTON D/LONG COFFEE MI
212A	10029622	RED BUTTON MANUAL DISPENSE MI
212B	10029638	BLUE BUTTON MANUAL DISPENSE MI
212C	10029641	BLACK BUTTON MANUAL DISP. MI
213A	10029623	RED BUTTON HOT WATER DISP. MI
213B	10029633	BLACK BUTTON HOT WATER DISP. MI
213C	10029640	BLUE BUTTON HOT WATER DISP. MI
214A	10102330A	WIRING MLX 2/SED
214B	10102332A	WIRING MLX 2/SAP
214C	10102334A	WIRING MLX 3/SED
214D	10102336	WIRING MLX 3/SAP
214E	10102338	WIRING MLX 1/SED
214F	10102340	WIRING MLX 1/SAP
215A	10112067	PIN TO PIN CABLE 1100mm
215B	10112069	PIN TO PIN CABLE 450mm
215C	10112073	PIN TO PIN CABLE 900mm
215D	10112078	PIN TO PIN CABLE 600mm
215E	10112079	PIN TO PIN CABLE 800mm
215F	10112096	PIN TO PIN CABLE 1400mm
216	30011087	PUSHBUTTON STRIP COVER MI
217A	10112087A	P/BUTTON STRIP SED MI GREEN LEDS
217B	10112099A	P/BUTTON STRIP SAP MI GREEN LEDS
218A	10029645	SCREEN PRINT. RED BUTTON KIT MI SED
218B	10029656	SCREEN PRINT. BLACK BUTTON KIT MI SED
218C	10029657	SCREEN PRINT. BLUE BUTTON KIT MI SED
218D	10029661	SCREEN PRINT. BLUE BUTTON KIT MI SAP
218E	10029662	SCREEN PRINT. BLACK BUTTON KIT MI SAP
218F	10029663	SCREEN PRINT. RED BUTTON KIT MI SAP
219	10555060A	COFFEE SWITCH W/ SCREEN PRINT
220	10105243A	TRANSP. SWITCH COVER
221A	10112071	CONTROL UNIT 1-2-3GR XLC 230V SED
221B	10112083	CONTROL UNIT 1-2-3GR XLC 230V SAP
222A	10955018	SAN REMO LABEL 70X11.3
222B	10955020	SAN REMO LABEL 101X16.5

223	10952008	"MANUAL FILLING" LABEL
224	10952019	TRAY WARNING LABEL
225	10402058	GRID CUP HEATING
226	10852010	STAY PIPE L. 500